



Beaufort County Public Works Stormwater Infrastructure Project Summary

Project Summary: Spann Circle Phase II

Activity: Drainage Improvement

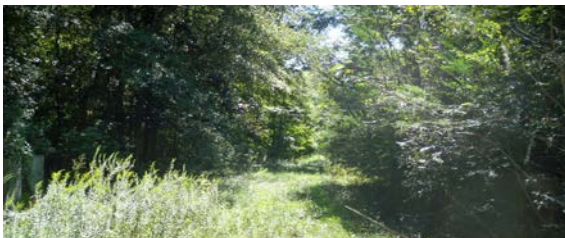
Narrative Description of Project:

Completion: Nov-13

Project improved 1,746 L.F. of drainage system. Shinn cut 1,746 L.F. of creek/stream and channel. Constructed 520 L.F. of channel and workshelf. Reconstructed 1,226 L.F. of creek/stream and constructed 1,226 L.F. of workshelf. Installed (2) access pipes, (2) access gates and rip rap for erosion control. Hydroseeded for erosion control.

2013-630A / Spann Circle Phase II	Labor Hours	Labor Cost	Equipment Cost	Material Cost	Contractor Cost	Indirect Labor	Total Cost
AGI / Access Gate - Installed	9.0	\$198.96	\$10.86	\$266.56	\$0.00	\$136.68	\$613.06
AGP / Access Gate - Painted	13.5	\$298.44	\$16.29	\$10.29	\$0.00	\$205.02	\$530.04
APINS / Access pipe - installed	39.0	\$949.52	\$272.88	\$675.31	\$0.00	\$440.46	\$2,338.17
AUDIT / Audit Project	2.0	\$40.92	\$0.00	\$0.00	\$0.00	\$26.46	\$67.38
BPINST / Bleeder pipe - Installed	30.0	\$707.66	\$75.96	\$289.66	\$0.00	\$266.70	\$1,339.98
DWASPH / Driveway - Asphalt	40.0	\$914.75	\$54.30	\$63.06	\$0.00	\$521.75	\$1,553.86
HAUL / Hauling	290.0	\$5,910.94	\$3,113.70	\$3,385.05	\$0.00	\$2,617.05	\$15,026.74
HYDR / Hydroseeding	18.0	\$372.95	\$94.78	\$699.26	\$0.00	\$238.14	\$1,405.13
ODCO / Outfall ditch - cleaned out	149.0	\$3,586.41	\$1,356.94	\$437.35	\$0.00	\$1,729.03	\$7,109.73
ODSHN / Outfall ditch - Shinn cut	20.0	\$458.60	\$412.34	\$10.29	\$0.00	\$321.20	\$1,202.43
ONJV / Onsite Job Visit	117.0	\$3,954.24	\$423.54	\$252.75	\$0.00	\$2,660.97	\$7,291.50
PL / Project Layout	7.0	\$134.96	\$25.34	\$10.29	\$0.00	\$93.80	\$264.39
PP / Project Preparation	1.0	\$44.27	\$3.62	\$2.97	\$0.00	\$33.96	\$84.82
PROFS / Professional Services	0.0	\$0.00	\$0.00	\$0.00	\$1,850.00	\$0.00	\$1,850.00
SC / Sediment Control	20.0	\$458.60	\$72.40	\$50.77	\$0.00	\$321.20	\$902.97
SG / Shoot Grade	7.0	\$134.96	\$0.00	\$0.00	\$0.00	\$0.00	\$134.96
UTLOC / Utility locates	1.0	\$20.46	\$0.00	\$0.00	\$0.00	\$13.23	\$33.69
WSDR / Workshelf - Dressed	3.0	\$70.77	\$43.38	\$7.89	\$0.00	\$26.67	\$148.70
WSGRB / Workshelf - Grubbed	40.0	\$918.65	\$579.42	\$126.22	\$0.00	\$560.35	\$2,184.64
WSL / Workshelf - Level	32.0	\$722.86	\$292.40	\$294.79	\$0.00	\$486.44	\$1,796.49
WSSHN / Workshelf - Shinn cut	148.0	\$3,396.14	\$2,784.09	\$1,382.29	\$0.00	\$2,186.04	\$9,748.56
2013-630A / Spann Circle Phase II Sub Total	986.5	\$23,295.05	\$9,632.24	\$7,964.80	\$1,850.00	\$12,885.15	\$55,627.24
Grand Total	986.5	\$23,295.05	\$9,632.24	\$7,964.80	\$1,850.00	\$12,885.15	\$55,627.24

Before



During



After



**Project: Spann
Circle Phase II**

**Activity: Drainage
Improvement**

**Project #:
2013-630A**

**Township:
Sheldon**

**Completed:
November 2013**



Legend

TYPE

- River
- Creek/Stream
- River/Creek/Marsh BANK
- Channel (fka Outfall)
- Channel Pipe
- Lateral
- Lateral Pipe
- Roadside
- Roadside Pipe
- Road Pipe
- Crossline Pipe
- Driveway Pipe
- Access Pipe
- Bleeder Pipe



1 inch = 309 feet

Prepared By: BC Stormwater Management Utility

Date Print: 11/20/13

File:C:/sethdata/projects/projectmaps/Spann Cir PhII 2013-630A